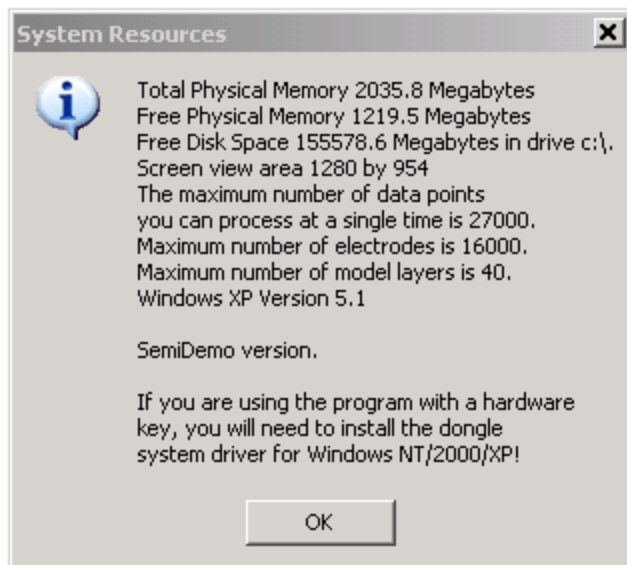
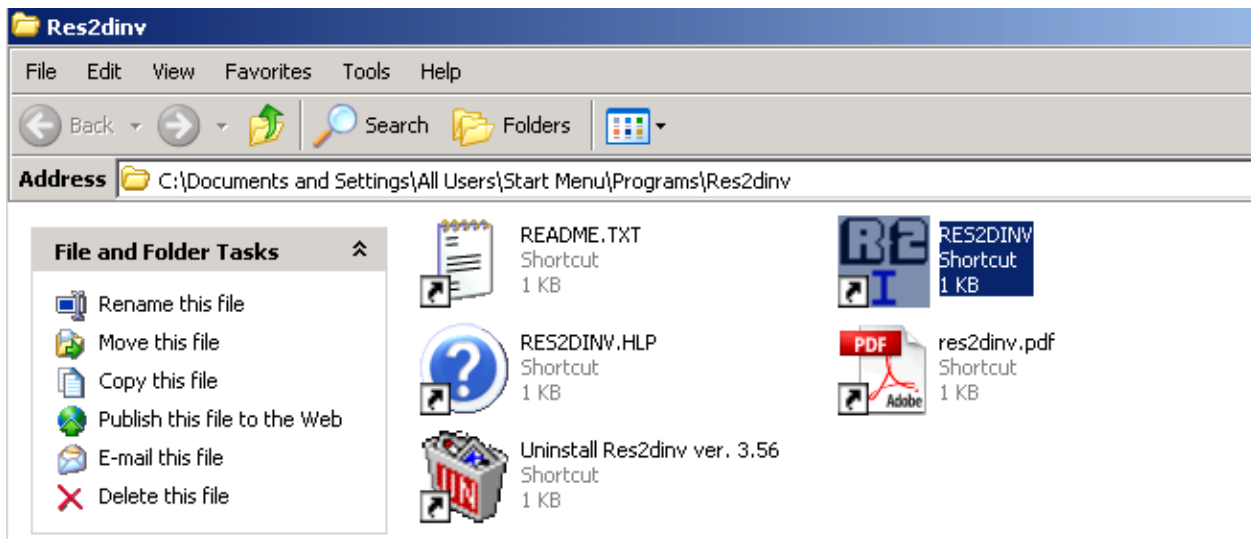


Setting up DEMO version of RES2DINV for the first time

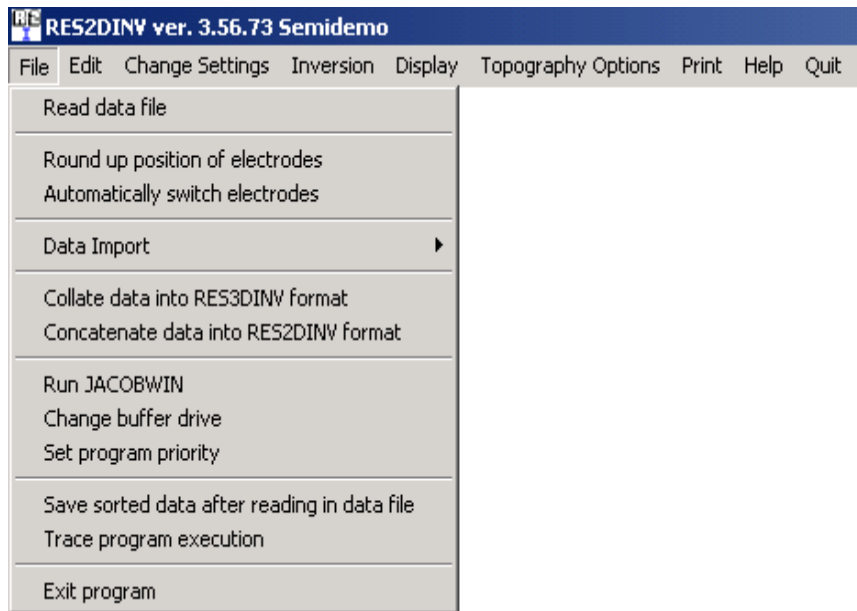
When you run through set up series of questions, click **OK** to the question about dongle installation. Setup will quit.

Then run the program from **Start\Programs\RES2DINV** or from folder where it has been installed.



Without a dongle you will see SemiDemo version. Click **OK**.

Big white screen will be there with menus on the top. If you see white screen only, my guess it is screen resolution on VISTA that makes it blown out of proportion. I did installed mine on VISTA Ultimate 64-bit using same file without any problem before, but today I happen to have Win XP computer without RES2DINV, so I run setup.exe on it step by step on it. Works fine.



Go File/Run Jacobwin if you using a program for the first time. It will calculate partial derivatives for most popular arrays. You will not need to run it again ever on the same computer.